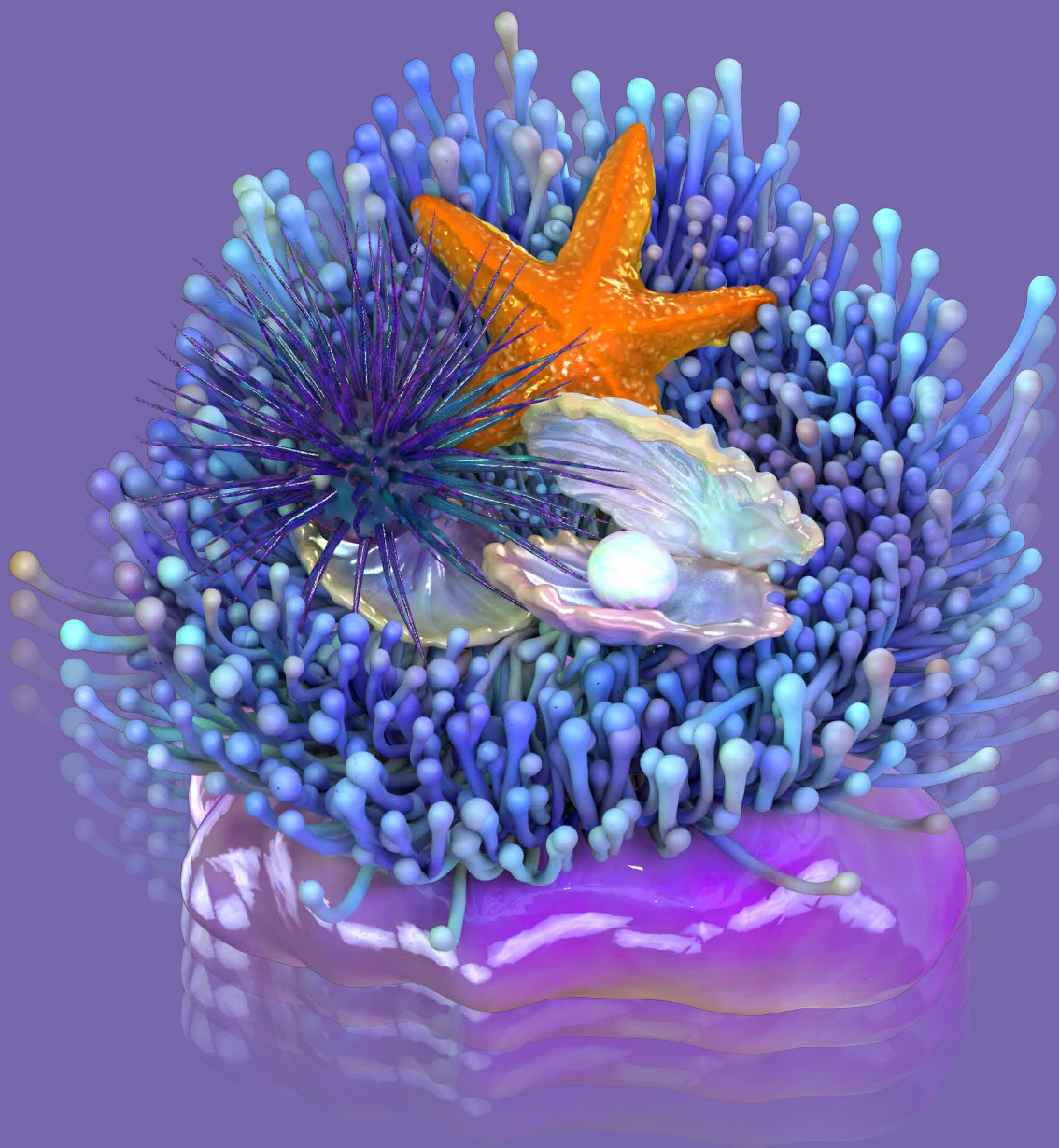


WE ARE

MOVING *IMAGES* NORTH

NEST Handbook

Provisional version dated 09 October 2024



MOIN Filmförderung
Hamburg
Schleswig-Holstein

moin-filmfoerderung.de/nest

Contents

Fact sheet for the funding measures	3
FAQ / How does it work...	
the application	8
the decision process	10
the NEST Space	12
the funding through NEST Tools	13
the NEST Community	16
NEST Tools	
Fiction Feature	17
NEST Tools	
Documentary Feature	21
NEST Tools	
Animation Feature	25
NEST Tools	
Series / Fiction	29
Serie / Documentary	33
Serie / Animation	37
NEST Tools	
Innovative Audiovisual Formats	41

Fact sheet for the funding measures in **NEST**

Development funding for
fiction features, animation and
documentary features, series
and innovative formats

This fact sheet provides basic information on the application requirements and conditions, as well as on the processing of projects within the framework of the NEST development funding.

1. Definition of Terms

The **NEST** replaces the previous funding types for treatments, screenplays, as well as idea and concept development for innovative audiovisual formats. It brings together writers, creators and producers, both online and offline.

NEST Spaces are collaborative thinking spaces that bring together the funded projects of an application round for five days. The goal of the NEST Spaces is to illuminate the potential of projects as thoroughly as possible in an early phase and to methodically engage with the idea before the writing process begins. The NEST Spaces take place in person in Schleswig-Holstein. The working language is English. Costs for travel (typically by train, second class, within Germany), accommodation and meals are covered by MOIN Film Funding. Participation in the NEST Spaces allows for the application of NEST Tools. Projects that do not wish to participate in the NEST Spaces can receive NEST Classic funding.

NEST Tools are standardized financial support measures. The range includes services for writers/creators and production services, as well as external consulting services. Tools are identified in collaboration with the applicants after the NEST Space and applied for as a package. The total of all tools corresponds to the amount of the overall funding measure.

The **NEST Classic funding** of 7,500 euros is granted to each funded project and supports the applicants in taking initial development steps.

2. What are the subsidies available for?

NEST provides funding and resources for the development of projects according to the guidelines of MOIN Film Funding (Section B|1.1). In addition to financial support through the NEST Classic funding and NEST Tools, these include the NEST Spaces. This applies to feature films, animation films, documentary films, series, as well as innovative formats.

The management has the option to fund one project per application round independently of the committee's recommendation if it is of particular interest to the location. Furthermore, the management can promote projects within talent programs, such as "Nordlichter" or "Der Besondere Kinderfilm," with a wildcard, independent of the committee's recommendation.

3. Type of funding and funding limit (NEST Tools)

The funding is provided in the form of repayable loans contingent upon success. The amount of the funding is determined by the project-specific funding components, the NEST Tools, that are agreed upon with MOIN Film Funding for the respective project. The maximum total amount of granted tools for development is as follows:

- Fiction Features up to 100,000 euros
- Documentary Features up to 50,000 euros
- Series up to 150,000 euros
- Innovative formats up to 50,000 euros

Further information on the content conception of the NEST Tools, their combinations within a project, or their processing can be found in the NEST FAQ.

Funded projects that do not participate in the NEST Spaces receive support through the NEST Classic funding. No additional tools can be used beyond this.

4. Eligible Costs

Fees for writers and, in the case of innovative audiovisual formats, for creators are generally always eligible for recognition as qualifying costs. In addition, the eligible costs result from the project-specific compilation of the granted NEST Tools, for which maximum costs are specified. The costs must be calculated net, i.e., excluding VAT.

NEST Tools that are to be provided as in-kind contributions must be approved in advance by the film funding agency.

5. Application Procedure

Writers can apply either individually or as producers who are already collaborating with writers at the time of application. For innovative audiovisual formats, applications may be submitted by creators individually or by producers who are already working with creators. Students can apply only after completing their studies.

Applications will be evaluated by independent experts and recommended for funding to the management. A deviation from the recommendation is only permitted for significant reasons. Applications must be submitted directly through the MOIN website on the NEST application portal and must be completed by the application deadline by 11:59 PM at the latest.

Decisions will be communicated via email, but generally, no justification will be provided.

It is possible to apply only for the NEST Classic funding of 7,500 euros without the option for tools.

When applying for the NEST Space, the participation declaration for writers or creators is binding. They also commit to attending a digital introduction meeting. If they do not participate in the NEST Space, the option for tools expires, and the funding will be reduced to the NEST Classic funding (see also FAQ).

6. Relevant Attachments on the NEST Portal

- Tell Me Video from the writer(s) or, for innovative formats, from the creator(s): Who - What - How - Why? (max. 3 mins in English or in native language with English subtitles)
- Project description (max. 500 characters, approx. ¼ page)
- Visualisations or mood boards (max. 5 pages PDF, max. 50MB)
- CV/Track Record (max. 1 page PDF, in English)
- Thoughts on target audience (max. 500 characters, approx. ¼ page)
- Information on regional relevance (max. 500 characters, approx. ¼ page)

7. Other Requirements

Each applicant may submit one project per application deadline. Additional projects will not be considered.

There is no entitlement to funding under the NEST program or to participation in NEST Spaces. Funding for one measure does not confer any entitlement to funding for subsequent measures.

No application can be submitted for a measure that has already commenced.

If a screenplay or development contract has already been concluded with writers or creators, the measure is considered to have started.

If the project has already been funded by another institution, an application to MOIN Film Funding for NEST is no longer possible.

Applicants have no claim to the deletion of uploaded documents.

8. Funding Application

Those applying only for the NEST Classic funding can submit a funding application of 7,500 euros directly after receiving the funding recommendation from the committee. The application can be submitted through the NEST Portal after activation.

Applicants selected for participation in the NEST Space will jointly establish the project planning goals and the required tools with MOIN Film Funding after the Space, along with an overall funding amount.

This agreement will be generated via the NEST Portal and confirmed in the form of the application by the applicants.

9. Contract and Disbursement of Funding

Both the NEST Classic funding and the total amount for all selected NEST tools will be provided as success-dependent, repayable, interest-free loans.

The loan will be disbursed in accordance with the contractual agreements as needed, following the verification of the agreed statements or evidence, in installments.

Unused or not fully-utilized tools will be reduced, thereby decreasing the funding loan.

10. Early Termination of Funding Measure

Funding recipients may unilaterally declare the termination of the funding measure at any time. In this case, tools that have already been started can be completed if the evidence is provided accordingly. Tools that have been granted but not yet utilized will expire.

The film funding agency has the option to revoke the funding measure for significant reasons and

terminate any loan agreements that may have already been concluded. Significant reasons include, among other things, the improper use of tools or substantial deviations from agreed planning goals. Tools that have already been started and/or commissioned can be completed in the event of a contract termination and disbursed after verification of the evidence.

11. Repayment of Funding

The loan must be repaid upon the commencement of principal photography or production, or upon the sale of rights to the funded measure. It must be ensured that the claim for repayment by the MOIN Film Fund remains valid even if the rights revert to the creators.

12. Important Considerations after Funding Approval

Funding approvals are valid for a limited period, which will be explicitly stated in the approval communication. Requests for extensions due to significant reasons must be submitted in writing via email in a timely manner prior to the expiration of the deadline.

If a project is funded under the development phase in NEST as per Section B|1 of the guidelines, a

funding application for production for the funded project must be submitted to MOIN Film Funding.

All publications regarding the project must acknowledge the funding from MOIN Film Funding, as outlined in the acknowledgment obligations [see <https://moin-filmfoerderung.de/foerderung/downloads>].

13. For Further Questions

...the FAQ provides information. The funding consultants of MOIN Film Fund can assist with questions regarding the application process. For inquiries about the loan agreement and processing, the MOIN team for contract management can provide guidance. Relevant contacts can be found on the MOIN website [see <https://moin-filmfoerderung.de/foerderung/downloads>].

Date: 09 October 2024

FAQ - How does it work...

...the application process

What opportunities are there to receive funding from NEST?

At the beginning of the application process, you can choose between two options:

- a) You apply for NEST, meaning participation in the NEST Space and access to the NEST Tools, including basic funding of at least 7,500 euros.
- b) You apply for NEST Classic funding of 7,500 euros. This means you cannot participate in the NEST Space and cannot access the NEST Tools.

Who can apply for NEST funding?

Writers and creators or producers together with their writers or creators can apply.

Writers are those who write fictional, documentary, or series content. By creators, we mean the creatives behind innovative audiovisual formats. Producers who also see themselves as creative producers are classified as producers. As an applicant, you must have signatory authority for the production company.

Writers with their own production companies can only apply as writers and cannot also function as producers for the projects in which they are involved as writers.

The tools directed at producers and the company tools can only be used if the application is submitted by the producers.

Why apply? I thought it was a funding submissions?

The NEST funding occurs at the idea level, which is significantly earlier concerning your project's status. Therefore, your NEST application does not constitute a formal submission; this can only occur at a later stage.

After you submit your NEST application, it is evaluated by the Community Panel (2024: the committees, see below). If it is one of the best-rated applications, you qualify for participation in the NEST Space (a) or the NEST Classic funding of 7,500 euros (b).

After the NEST Spaces conclude, discussions will take place regarding the allocation of the NEST Tools (see below) with the consultants from the MOIN funding department. The allocation of the NEST Tools results in the total funding amount for your project. The formal submission for this amount is then submitted digitally. Following this submission, you will receive a formal confirmation and can subsequently conclude the loan agreement with the relevant contacts from the MOIN contracts department.

The project may not have commenced before this application is submitted. A project is considered started, for example, if writers have signed a contract with one another or if producers have signed a contract with their writers. Written agreements can be a deal memo or an option agreement at most. Contracts may only be concluded after the formal application has been submitted.

Do I need to be based in the region?

If you are not based in the region, you should explain in the regional connection statements how a connection to our region is established. This aspect is considered in the selection process. Applications from abroad are possible.

Are the NEST Spaces designed for all applicants or primarily aimed at newcomers?

The NEST Space is not a training initiative for newcomers; it is equally valuable for established creatives. It creates spaces for exchange and collaboration among writers, creators, and producers with very different backgrounds and experience levels.

For which application types and genres can one apply?

You can apply with fiction, documentary or animation features, as high-end series and cross-genre innovative audiovisual formats. If you are writing an animated or documentary series, your project qualifies as a series. As before, no development funding is offered for short films.

Is there no more project consulting through MOIN Film Funding?

The application occurs at the idea level, which is significantly earlier than before. Due to the very streamlined application process and the early project phase, project consulting in the previous sense is unnecessary. Any questions that cannot be answered by the fact sheet, FAQ, and application portal will be answered by the team of our application department.

Am I applying for a fixed amount of funding?

The need is assessed together with the relevant contacts from the MOIN application department after participation in the NEST Space. Only projects that do not participate in the NEST Space receive the fixed NEST Classic funding of 7,500 euros.

How does the application work?

Applications are made through the NEST Portal on the MOIN website. Applicants register directly; no activation by MOIN is necessary. The application can be gradually completed and then submitted.

Where can I find the application deadlines?

There are four deadlines per year published on the MOIN website, along with the timeframes for the respective NEST Spaces and the digital introductory dates.

By when must the application be submitted?

The digital application must be submitted by 11:59 PM on the day of the deadline. However, to avoid technical difficulties, we recommend submitting the application well in advance.

Can I apply with a project multiple times?

No. Projects should approach NEST fresh from the idea stage.

Can I apply with multiple projects at the same time?

No. Applicants can only represent ONE project in the Space and thus can only be involved in one application. Writers or creators must either submit themselves or collaborate only with producers or exclusively with writers or creators.

What documents are required for the application?

Detailed information can be found in the NEST Portal on the website and in the fact sheet. We emphasize supporting a low-threshold, streamlined application and obtaining only relevant decision-making information. The application includes the following documents:

The application includes the following documentation

- Project description (max. 500 characters, approx. ¼ page)
- 3-minute Tell Me Video (optionally in English or with English subtitles)
- Visualisations or mood boards (max. 5 pages PDF, max. 50 MB)
- CV and track record in English (max. 1 page PDF each)
- Thoughts on the target audience (max. 500 characters, approx. ¼ page)
- Information on regional connection (max. 500 characters, approx. ¼ page)

What must be considered regarding the length and design of the application?

Character counts include spaces. There are no further requirements for design.

What must be considered regarding language?

Applications can generally be submitted in German or English. In any case, the Tell Me Video and the CV/track record of the applicants must be in English or in the native language with English subtitles (for the English-speaking moderators in the NEST Space).

What should the Tell Me Video look like, and what should it include?

The Tell Me Video is a webcam/smartphone recording in which you introduce yourself and the project in a maximum of three minutes. The video can be uploaded in English or in the native language with English subtitles. If you record your Tell Me as a team, please introduce each speaker to your audience.

The Tell Me should be as basic as possible, consisting of a single shot without cuts, and can be recorded in selfie mode with a smartphone or with a webcam. The focus is on the project, not on perfect film production. In general: Don't overthink it. Your Tell Me Video should convince, inspire, engage, address, beguile, touch, surprise, excite, and create curiosity. Or at least one of those.

Please upload the video through platforms like Vimeo or YouTube. Feel free to use password protection or upload it as an unlisted video, ensuring that it remains accessible without an account or access authorisation and without calling limits at least until after the Space. Download links like WeTransfer or Google Drive cannot be used.

Where can I upload additional materials?

All required documents are uploaded through the NEST Portal, which can be found on our website. Additional materials cannot be uploaded.

Will I receive new login data for each new application?

No. The registration of applicants is done once. All applicants create their own account on the NEST platform, where the projects are managed. There, they can view the status of ongoing applications and submit new applications.

Can I apply as a student?

No, unfortunately not. Students develop their projects as part of their education at universities, film schools, and other training institutions. Therefore, we cannot support projects required as part of their studies.

What funding options do projects that are already further developed (e.g., with an existing script or concept) have?

These projects can apply for project development or prototype funding as usual.

Can documents be submitted later?

No. In the NEST Portal, only complete applications can be submitted. Changes can be made at any time before the application is submitted, and they are automatically saved in the NEST Portal.

...the decision process**When can I expect a decision on my application?**

When can I expect a decision on my application? The decision on your application is displayed 4-6 weeks after the deadline on your profile.

Who decides whether a project should be funded in principle?

In 2024, the existing MOIN funding committees will assess the applications. After that, the assessment will be carried out by members of the NEST Community. The Community Panel is assembled by MOIN and consists of alumni of previous NEST Spaces. Gender parity, diversity, and expertise are taken into account.

How is the diversity of the Community Panel ensured?

In 2024, we will work with the existing committees, which are already diverse. From 2025 onwards, members of the Community can express themselves during onboarding on the NEST Community platform and declare their belonging to an underrepresented group (according to the Federal Gender Equality Act). This will enable MOIN to assemble a review jury – the Community Panel – which embodies a variety of diversity characteristics.

How is expertise ensured in the selection?

In 2024, we will collaborate with the existing committees, which have already been selected based on their expertise.

From 2025 onwards, Community members can explain their specific competencies during onboarding on the Community platform, which can be related to genres (feature film, series, documentary, animation, innovative audiovisual formats) and areas of experience in specific market sectors (arthouse/mainstream).

Is the work of the Community Panel compensated?

Yes. As before, jury service is compensated with an expense allowance.

Will the names of the Community Panel be published?

The names of the participating individuals will be announced in the corresponding press releases but will be treated confidentially until the time of decision-making.

How are conflicts of interest handled?

If individuals are involved in projects presented for assessment, they disclose their conflict of interest and abstain from evaluation.

How are decisions made?

Projects are stored in compliance with GDPR on the internal MOIN voting platform. There, members of the Community Panel can evaluate projects based on the relevant decision-making questions. Unlike before, no joint meetings are required for this.

What criteria are used to evaluate the projects?

The evaluation is based on the following questions: originality, motivation, market potential, visuality, relevance, regionality, and implementation competence.

How many projects are funded?

At each of the four NEST Spaces per year, ten projects can participate. The spots are allocated based on a ranking evaluation. If more than ten projects meet the criteria for the NEST Space, projects 11-13 (i.e., three overflow projects) can each receive NEST Classic funding.

Additionally, up to three projects that have applied directly for the NEST Classic funding of 7,500 euros can be funded.

Does MOIN Film Funding no longer have any influence on the decisions?

The selection processes operate independently, but MOIN defines the framework and processes. Furthermore, MOIN has the option to name a project via wildcard.

When and how do I receive acceptance or rejection notifications?

The decisions will be communicated to the applicants via email through the NEST Portal after the assessment process concludes, and they will be stored in the personal NEST account.

Here, applicants can also see any specific comments from the Community Panel regarding their project. For the further processing of funding, contracts, and supporting documents, the original applicant remains the sole point of contact for MOIN Film Fund.

My project was not funded. Will I find out why?

The Community Panel (2024: the committees) may leave comments for the

applicants during the voting process. These will reach the applicants anonymously in the NEST Portal. Since the selection processes are independent, the MOIN team does not have any further information regarding this.

My project was funded. When will the money be disbursed?

The goal for the amount of the NEST Classic funding of 7,500 euros for fictional projects is to create a treatment, and for documentary projects and innovative audiovisual formats (e.g., XR, 360-degree films), to produce a concept paper. This result serves as proof for writers/creators and, together with the loan agreement, forms the basis for disbursement. Supporting documents must be provided within three months.

If the application is made by producers with writers/creators, a contract regarding collaboration and, if applicable, rights transfer must also be presented along with a cost status. The respective documentation process – and thus the disbursement modalities – for projects with access to the tools is explained under NEST Tools.

...the NEST Space

What is the NEST Space?

The NEST Space is a collaborative thinking and working environment that brings together the ten selected projects of an application round for five days. The objective of the NEST Spaces is to explore the projects' potential as thoroughly as possible in an early phase and to methodically engage with the idea in a variety of ways before the writing process begins.

The execution of the NEST Spaces is handled by the European initiative Le Groupe Ouest (<https://www.legroupeouest.com/>). The working language of the NEST Spaces is therefore English.

Where do the NEST Spaces take place?

The NEST Spaces take place approximately 80 km from Hamburg in Schleswig-Holstein. Arrival is on Monday morning, and departure is on Friday late afternoon.

When do the NEST Spaces take place?

There are four NEST Spaces per year. The NEST Spaces always take place shortly after the decision dates. The precise dates for the NEST Spaces are stated in the application process and on the MOIN website.

Who pays for the stay in the NEST Space?

Costs for travel (2nd class train within Germany), accommodation, and meals are covered by MOIN Film Funding.

Must every project participate in the NEST Space?

No, the applicants must decide at the beginning of the application process: Those applying for the NEST Space must commit to participate if the project is selected. Alternatively, an application for NEST Classic funding (and only this) is possible.

Who participates in the NEST Spaces?

Writers and creators always participate, while producers take part in an introductory online meeting beforehand.

The makers of fictional and documentary projects as well as innovative audiovisual formats take part in the same Space. The goal is to exchange ideas between writers and creators of different genres and inspire each other.

How many spots are available in each NEST Space?

Ten projects can participate in each NEST Space, represented by a writer or creator. If there are co-writers or co-creators, a maximum of one additional person can participate per project. They must be present for the entire duration; part-time attendance is not possible. The producers who submitted the application can participate in the NEST Space along with their writers or creators on the first day.

When and how will I be notified if I can participate in the NEST Space?

Whether participation in a NEST Space is possible will be communicated to the applicant via email after selection.

What if I unexpectedly cannot participate in the NEST Space date?

The number of participants is limited, and many resources are invested in the planning-intensive implementation of the NEST Spaces. The success of the Spaces also depends on all ten projects being present on site. The declaration of participation in the NEST Space during the application is therefore binding.

If, in important, non-deferrable exceptional cases that were not foreseeable at the time of application, participation is not possible, a one-time postponement to the next NEST Space in consultation with MOIN Film Funding is possible. Professional appointments, such as script discussions, festival trips, financing talks, etc., do not explicitly count as exceptional cases.

I have children and/or need to care for relatives. Therefore, it is difficult for me to organize participation in the NEST Space. What can I do?

For NEST Space participants who care for children or relatives, financial compensation for care is possible. Upon documentation of the relevant receipts, MOIN Film Funding covers additional costs of up to 500 euros for hardship cases.

The cost coverage must be approved in advance by MOIN. The contact person is Nicola Jones.

Can I reapply with the same project if I was not selected for the Space?

Since the NEST Spaces are intentionally focused on an early project phase, reapplication is not possible.

Can I participate in the NEST Space multiple times?

Yes, a new application can be submitted with each new project, providing the opportunity to be selected for the NEST Space again. Moreover, with the knowledge of the possibilities that the NEST Spaces offer, they can be utilized even better for new projects.

How can it be avoided that the creative potential of the NEST Spaces is reduced due to the same participants meeting repeatedly in the Spaces?

As a regional funding body, we are particularly responsible for development in the regional industry but have not excluded others either.

It is possible to accept projects linked to our region from applicants from other regions or to enter into targeted collaborations (e.g., from other regions in Germany or with other European funding bodies). This expands the talent pool at the location and ensures that participation in the NEST Spaces remains a valuable resource for applicants.

...Funding through NEST Tools**What funding options do the NEST Tools provide?**

A variety of NEST Tools, i.e. individual funding measures in the areas of script and concept development, are provided. In the tool table, they are divided by project genres into blocks: writer & creator services, production services, external consulting/services, audience development/visualisation, and the PWC tool. A tool for corporate development can additionally be applied for through the regular MOIN application portal as a special measure.

The range of tools extends from standards such as fees for writers and creators, dramaturgical consulting, to the funding of writers' rooms, staged readings, AI consulting, and sensitivity readings.

The funding amounts for the individual tools range from 1,000 euros to 20,000 euros. They are combined into a package and can reach a total funding sum of up to 100,000 euros for a feature film project. Each tool is listed with a maximum

funding amount; only the actual incurred or proven costs are paid out. The tools were developed in collaboration with the industry, meaning they are needs-oriented and are updated and adjusted annually.

Who decides on the composition of the NEST Tools?

All projects that have participated in the NEST Spaces will immediately enter into dialogue with the funding consultants of the MOIN application department regarding the allocation of the tools. The final decision rests with MOIN Film Fund.

How does the practical allocation and assignment of the NEST Tools work?

The applicants' accounts in the NEST Portal are also used for managing the projects. The assignment of the NEST Tools is carried out digitally by the MOIN team. The documentation process and thus the disbursement requirements are also handled through the account

Can I change the appointed NEST Tools later?

The NEST Tools, which are established through mutual discussion, form the basis of the loan agreement. Therefore, they cannot be changed afterward.

Are the funding amounts for the individual tools gross or net?

The funding amounts from MOIN Film Funding are always net, i.e., excluding VAT. VAT incurred on services from third parties (e.g., for consulting services) can be claimed by applicants who are entitled to deduct input tax from the tax office.

Do I have to pay back the funding?

The funding is granted as a success-contingent repayable, interest-free loan. By success, we mean the sale of rights to the material and/or the realization of the project.

What documentation must I provide for the accounting of the NEST Tools?

The documentation and disbursement modalities for the different NEST Tools are specified in the respective table. Depending on the tool, this may include a short report, a simple invoice, the treatment or concept, or the final screenplay. The documentation is uploaded as PDFs and reviewed by the MOIN team. After that, the disbursement is made. More complex measures will be submitted to PWC for verification.

Is failure allowed?

Yes. If projects have no prospect of successful further development, according to the assessment of the funding recipients, development can be halted without penalties. MOIN must be informed accordingly. Already commenced/commissioned NEST Tools will be concluded and settled in this case. Tools not yet utilized will expire.

Explanation of the Tool Table

The NEST Tools are selected, awarded, and form the basis of the loan agreement in discussions with the MOIN funding consultants following participation in the NEST Space.

What does “emerging talent” mean?

MOIN defines “emerging talent” as writers or producers who want to realize their first to third feature-length film intended for artistic & commercial potential distribution or festival screening.

When established production companies apply, the status of the emerging writer is relevant. If several projects (e.g., documentaries) have already been realized, only the first project in a different genre (e.g., feature film) counts as an emerging project. In the field of innovative audiovisual formats, applicants are considered emerging creators if they want to realize their first to third XR or 360-degree project intended for artistic & commercial potential distribution or festival screening. More on the emerging talent definition: https://moin-assets.b-cdn.net/storage/download/Merkblatt-DEFINITION-EMERGING_TALENT.pdf

Why does MOIN Film Funding require documentation?

The disbursement of the agreed funding amount in the loan agreement occurs once the listed documentation has been uploaded and verified by MOIN in the NEST Portal. For example, once the treatment is available, the amount for the tool can be disbursed. This process continues, if necessary, tool by tool.

NEST Classic Funding

If you apply for NEST Classic funding of 7,500 euros, you cannot participate in the NEST Space and have no access to the NEST Tools.

How comprehensive should a treatment be?

A treatment for a fictional project describes the plot, locations, and characters in about 10-15 pages; for non-fiction projects, approximately 3-5 pages are required.

What is a Short Bible?

The Short Bible for a series outlines genre, format, storyline, dramatic arc, characterizations, and artistic implementation (look & feel, possibly mood board) in about 10-15 pages.

What does a project description contain?

The project description for a documentary film project should contain character concepts, content, concepts for the visual world, and sound concepts in about 10 pages.

What is a concept paper?

A concept paper for innovative formats should depict the project's full working status and may include not only content details but also information on the planned technical and artistic implementation. Visualisations (image and video material) can be part of the concept paper. The scope is at least 5-10 pages.

What is understood by a concept for immersive projects?

A concept should represent the full working status of the innovative format and must include details on planned technical and artistic implementation alongside content descriptions (e.g., script, storyboard). Visualisations (image or video material) must be part of the concept.

What exactly is the cost status?

The cost status is a listing of all costs incurred to date for the implementation of the tool (therefore, no calculations). Receipts must be collected and submitted upon request; otherwise, funding may be reduced or completely terminated.

How many co-writers can work on a project?

In addition to the main writer, only one additional person can be funded as a co-writer. If the writership team is larger, the funding amount must be divided. Only one writer, with at most one co-writer, can participate in the Space.

How many screenplay versions are funded?

Writers can apply for funding for the first two drafts of a screenplay. If producers apply together with writers, up to three drafts can be supported in the emerging talent category.

External Consulting/Services

This refers to out-sourced services which are not performed within the own company.

Report

A description of the commissioned measure and its results is required in the form of a report by the funding recipients, approximately ¼ page long. It can be written by the funding recipients or by external service providers.

PWC-Tool

The PWC tool is selected when a calculation and usage verification are required for the desired measure, which will be checked by the independent auditing firm PWC. The amount covers the costs for the verification of documentation.

What should be noted regarding the Corporate Development Tool?

ONE tool can be selected from the Corporate Development table and applied for separately through the MOIN application portal as a special measure "Training and Qualification." It is granted as a subsidy by the management and does not have to be repaid. More information on "Training and Qualification": https://moin-assets.b-cdn.net/storage/download/Merkblatt-Weiterbildung-Qualifizierung_0.pdf

...the NEST Community**Who is in the NEST Community?**

The community consists of alumni of the NEST Spaces, i.e., individuals who have previously participated in a NEST Space.

What happens in the NEST Community?

The NEST Community will form the pool from which the Community Panel will be constituted from 2025 onwards.

The network that formed during the NEST Spaces continues to grow. Additionally, MOIN makes specific content offerings to the NEST Community, creating incentives for networking throughout the year.

Fiction

Support for Writers

	FICTION FEATURE	FICTION FEATURE EMERGING TALENT	PROOF (IF APPLICANT IS A WRITER)	PROOF (IF APPLICANT IS A PRODUCER)
NEST Classic				
If Applicant is a Writer	7,500,00€		Treatment	–
If Applicant is a Producer	7,500,00€		–	Treatment, Contract, Cost Status (net)

all amounts up to

Basic Funding	10,000,00€	7,500,00€	Treatment	Treatment, Contract
80% Script (1 st Draft)	16,000,00€	12,000,00€	Self-Declaration of Beginning of Measure	Script Development Contract
20% Script (1 st Draft)	4,000,00€	3,000,00€	Script	Script, Cost Status (net)
Script (2 nd Draft)	15,000,00€	5,000,00€	Script	Script, Cost Status (net)
Script (3 rd Draft)	–	5,000,00€	–	Script, Cost Status (net)
Co-Writer (1 st Draft)	10,000,00€	5,000,00€	Script Development Contract	Script Development Contract
Co-Writer (2 nd Draft)	5,000,00€	2,500,00€	–	Script (approved by producer)
Co-Writer (3 rd Draft)	–	2,500,00€	–	Script (approved by producer)

Support for Producers

all amounts up to

Treatment - Script Consulting	2,500,00€		–	Internal Receipt with Billing Period
Script (1 st Draft) - Script Consulting	7,500,00€		–	Internal Receipt with Billing Period
Script (2 nd Draft) - Script Consulting	5,000,00€	2,500,00€	–	Internal Receipt with Billing Period
Script (3 rd Draft) - Script Consulting	–	2,500,00€	–	Internal Receipt with Billing Period

External Services / Consulting

	FICTION FEATURE	FICTION FEATURE EMERGING TALENT	PROOF (IF APPLICANT IS A WRITER)	PROOF (IF APPLICANT IS A PRODUCER)
<i>all amounts up to</i>				
Treatment - External Script Consulting	1,000,00€		External Invoice	External Invoice
Script - External Script Consulting 1 st Draft	2,500,00€		External Invoice	External Invoice
Script - External Script Consulting 2 nd Draft	2,500,00€		External Invoice	External Invoice
Legal Advice (Copyright/ Privacy Rights)	1,500,00€		External Invoice	External Invoice
Sensitivity Reading + Consulting	1,500,00€		External Invoice + ¼ Page Report by the Funding Recipient	External Invoice + ¼ Page Report by the Funding Recipient
Green Storytelling	1,500,00€		External Invoice + ¼ Page Report by the Funding Recipient	External Invoice + ¼ Page Report by the Funding Recipient
Translations	2,500,00€		External Invoice	External Invoice
Script - Staged Reading	3,000,00€		Cost Status (net)	Cost Status (net)
Expert Advice on Specialist Topics	2,000,00€		External Invoice + ¼ Page Report by the Funding Recipient	External Invoice + ¼ Page Report by the Funding Recipient
AI Project Consulting	1,000,00€		External Invoice + ¼ Page Report by the Funding Recipient	External Invoice + ¼ Page Report by the Funding Recipient
VFX/Post-Production Consulting	1,500,00€		External Invoice + ¼ Page Report by the Funding Recipient	External Invoice + ¼ Page Report by the Funding Recipient

Audience Development / Visualisation

	FICTION FEATURE	FICTION FEATURE EMERGING TALENT	PROOF (IF APPLICANT IS A WRITER)	PROOF (IF APPLICANT IS A PRODUCER)
<i>all amounts up to</i>				
Independent National Market Analysis based on 1 st draft of Pilot Script (artistic & commercial potential/SWOT/ festivals/key territories/ USP)	1,500,00€		–	External Invoice + Analysis
Independent International Market Analysis based on 1 st draft of Script (artistic & commercial potential/ SWOT/festivals/key territories/USP)	1,500,00€		–	External Invoice + Analysis
Target Group Feedback (e.g. reading with school class, workshop with stakeholders)	2,000,00€		–	Cost Status (net) + Report
External Graphic Design for further Project Development or Pitch Deck	2,000,00€		External Invoice + Pitch Deck	External Invoice + Pitch Deck

**Company
Development**

	FICTION FEATURE	FICTION FEATURE EMERGING TALENT	PROOF (IF APPLICANT IS A WRITER)	PROOF (IF APPLICANT IS A PRODUCER)
<i>all amounts up to</i>				
Tax Consulting	5,000,00€		–	External Invoice
Legal Advice	5,000,00€		–	External Invoice
Consulting on Corporate Strategy and Transformation	5,000,00€		–	External Invoice + ¼ Page Report by the Funding Recipient
Leadership Coaching	5,000,00€		–	External Invoice + ¼ Page Report by the Funding Recipient
New Work Coaching	5,000,00€		–	External Invoice + ¼ Page Report by the Funding Recipient
Human Ressources Coaching (Diversity + Approach)	5,000,00€		–	External Invoice + ¼ Page Report by the Funding Recipient
Green Transformation Consulting	5,000,00€		–	External Invoice + ¼ Page Report by the Funding Recipient

Documentary

Support for Directors

	DOCU- MENTARY FEATURE	DOCU- MENTARY FEATURE EMERGING TALENT	PROOF (IF APPLICANT IS A DIRECTOR)	PROOF (IF APPLICANT IS A PRODUCER)
NEST Classic	<i>all amounts up to</i>			
If Applicant is a Director	7,500,00€		Treatment	–
If Applicant is a Producer	7,500,00€		–	Treatment, Contract, Cost Status (net)

	<i>all amounts up to</i>			
Basic Funding	10,000,00€	7,500,00€	Treatment	Treatment, Contract
80% Project Description	10,000,00€	6,000,00€	Self-Declaration of Beginning of Measure	Contract
20% Project Description	2,000,00€	1,500,00€	Project Description	Project Description, Cost Status (net)
Co-Writer Project Description	5,000,00€	2,500,00€	Contract	Contract
Travel Expenses (Director)	2,500,00€		Cost Status (net)	Cost Status (net)

Support for Producers

	<i>all amounts up to</i>			
Treatment - Script Consulting	2,500,00€		–	Internal Receipt with Billing Period
Project Description - Script Consulting	5,000,00€		–	Internal Receipt with Billing Period
Travel Expenses (Producer)	2,500,00€		–	Cost Status (net)

External Services / Consulting

	DOCU- MENTARY FEATURE	DOCU- MENTARY FEATURE EMERGING TALENT	PROOF (IF APPLICANT IS A DIRECTOR)	PROOF (IF APPLICANT IS A PRODUCER)
<i>all amounts up to</i>				
Treatment - External Script Consulting	1,000,00€		External Invoice	External Invoice
Project Description - External Script Consulting	2,500,00€		External Invoice	External Invoice
Legal Advice (Copyright/ Privacy Rights)	2,000,00€		External Invoice	External Invoice
Sensitivity-Beratung	1,500,00€		External Invoice + ¼ Page Report by the Funding Recipient	External Invoice + ¼ Page Report by the Funding Recipient
Translations	2,000,00€		External Invoice	External Invoice
Expert Advice on Specialist Topics	2,000,00€		External Invoice + ¼ Page Report by the Funding Recipient	External Invoice + ¼ Page Report by the Funding Recipient
Research (incl. Travel Expenses)	1,500,00€		External Invoice	External Invoice
AI Project Consulting	1,000,00€		External Invoice + ¼ Page Report by the Funding Recipient	External Invoice + ¼ Page Report by the Funding Recipient
VFX/Postproduction Consulting	1,500,00€		External Invoice + ¼ Page Report by the Funding Recipient	External Invoice + ¼ Page Report by the Funding Recipient
Green Production/ Consulting/Storytelling	1,500,00€		External Invoice + ¼ Page Report by the Funding Recipient	External Invoice + ¼ Page Report by the Funding Recipient

Audience Development / Visualisation

	DOCU- MENTARY FEATURE	DOCU- MENTARY FEATURE EMERGING TALENT	PROOF (IF APPLICANT IS A DIRECTOR)	PROOF (IF APPLICANT IS A PRODUCER)
<i>all amounts up to</i>				
Independent National Market Analysis based on Project Description (analysis of artistic & commercial potential potential/SWOT/ Festivals/Key Territories/ USP)	1,500,00€		–	External Invoice + Analysis
Independent International Market Analysis based on Project Description (analysis of artistic & commercial potential potential/SWOT/ Festivals/Key Territories/ USP)	1,500,00€		–	External Invoice + Analysis
Target group feedback (e.g. reading with school class, workshop with stakeholders)	2,000,00€		–	Cost Status (net) + Report
External Graphic Design for further Project Development or Pitch Deck	2,000,00€		External Invoice + Pitch Deck	External Invoice + Pitch Deck
80% Test- oder Trailerreh*	6,000,00€		Calculation	Calculation
20% Test- oder Trailerreh*	1,500,00€		Proof of Use of Funds + Test-/Trailer Footage	Proof of Use of Funds + Test-/Trailer Footage

* If this tool is selected, the PWC tool must also be selected.

PWC Tool

	DOCU- MENTARY FEATURE	DOCU- MENTARY FEATURE EMERGING TALENT	PROOF (IF APPLICANT IS A DIRECTOR)	PROOF (IF APPLICANT IS A PRODUCER)
<i>all amounts up to</i>				
PWC TOOL	766,00€			

**Company
Development**

	DOCU- MENTARY FEATURE	DOCU- MENTARY FEATURE EMERGING TALENT	PROOF (IF APPLICANT IS A DIRECTOR)	PROOF (IF APPLICANT IS A PRODUCER)
<i>all amounts up to</i>				
Tax Consulting	5,000,00€		–	External Invoice
Legal Advice	5,000,00€		–	External Invoice
Consulting on Corporate Strategy and Transformation	5,000,00€		–	External Invoice + ¼ Page Report by the Funding Recipient
Leadership Coaching	5,000,00€		–	External Invoice + ¼ Page Report by the Funding Recipient
New Work Coaching	5,000,00€		–	External Invoice + ¼ Page Report by the Funding Recipient
Human Ressources Coaching (Diversity + Approach)	5,000,00€		–	External Invoice + ¼ Page Report by the Funding Recipient
Green Transformation Consulting	5,000,00€		–	External Invoice + ¼ Page Report by the Funding Recipient

Animation

Support for Writers

	ANIMATION FEATURE	ANIMATION FEATURE EMERGING TALENT	PROOF (IF APPLICANT IS A WRITER)	PROOF (IF APPLICANT IS A PRODUCER)
NEST Classic				
If Applicant is a Writer	7,500,00€		Treatment	–
If Applicant is a Producer	7,500,00€		–	Treatment, Contract, Cost Status (net)

all amounts up to

Basic Funding	10,000,00€	7,500,00€	Treatment	Treatment, Contract
80% Script 1 st Draft	16,000,00€	12,000,00€	Self-Declaration of Beginning of Measure	Script Development Contract
20% Script 1 st Draft	4,000,00€	3,000,00€	Script	Script, Cost Status (net)
Script (2 nd Draft)	15,000,00€	5,000,00€	Script	Script, Cost Status (net)
Script (3 rd Draft)	–	5,000,00€	–	Script, Cost Status (net)
Co-Writer (1 st Draft)	10,000,00€	5,000,00€	Script Development Contract	ScriptContract
Co-Writer (2 nd Draft)	5,000,00€	2,500,00€	–	Script (approved by producer)
Co-Writer (3 rd Draft)	–	2,500,00€	–	Script (approved by producer)

Support for Producers

all amounts up to

Treatment - Script Consulting	2,500,00€		–	Internal Receipt with Billing Period
Script (1 st Draft) - Script Consulting	7,500,00€		–	Internal Receipt with Billing Period
Script (2 nd Draft) - Script Consulting	5,000,00€	2,500,00€	–	Internal Receipt with Billing Period
Script (3 rd Draft) - Script Consulting	–	2,500,00€	–	Internal Receipt with Billing Period

External Services / Consulting

	ANIMATION FEATURE	ANIMATION FEATURE EMERGING TALENT	PROOF (IF APPLICANT IS A WRITER)	PROOF (IF APPLICANT IS A PRODUCER)
<i>all amounts up to</i>				
Treatment - External Script Consulting	1,000,00€		External Invoice	External Invoice
Script (1 st Draft) - External Script Consulting	2,500,00€		External Invoice	External Invoice
Script (2 nd Draft) - External Script Consulting	2,500,00€		External Invoice	External Invoice
Legal Advice (Copyright/ Privacy Rights)	1,500,00€		External Invoice	External Invoice
Sensitivity Reading + Consulting	1,500,00€		External Invoice + ¼ Page Report by the Funding Recipient	External Invoice + ¼ Page Report by the Funding Recipient
Green Storytelling	1,500,00€		External Invoice + ¼ Page Report by the Funding Recipient	External Invoice + ¼ Page Report by the Funding Recipient
Translations	2,500,00€		External Invoice	External Invoice
Dialog Polish	5,000,00€		External Invoice	External Invoice
Script - Staged Reading	3,000,00€		Cost Status (net)	Cost Status (net)
Expert Advice on Specialist Topics	2,000,00€		External Invoice + ¼ Page Report by the Funding Recipient	External Invoice + ¼ Page Report by the Funding Recipient
AI Project Consulting	1,000,00€		External Invoice + ¼ Page Report by the Funding Recipient	External Invoice + ¼ Page Report by the Funding Recipient

Audience Development / Visualisation

	ANIMATION FEATURE	ANIMATION FEATURE EMERGING TALENT	PROOF (IF APPLICANT IS A WRITER)	PROOF (IF APPLICANT IS A PRODUCER)
<i>all amounts up to</i>				
Independent National Market Analysis based on 1 st draft of Script (artistic & commercial potential/SWOT/festivals/key territories/ USP)	1,500,00€		–	External Invoice + Analysis
Independent International Market Analysis based on 1 st draft of Script (artistic & commercial potential/SWOT/festivals/key territories/USP)	1,500,00€		–	External Invoice + Analysis
Beat Board (internal)	2,000,00€		Internal Receipt with Billing Period + Beat Board	Internal Receipt with Billing Period + Beat Board
Beat Board (external)	2,000,00€		External Invoice + Beat Board	External Invoice + Beat Board
Target Group Feedback (e.g. reading with school class, workshop with stakeholders)	2,000,00€		–	Cost Status (net) + Report
External Graphic Design for further Project Development or Pitch Deck	2,000,00€		External Invoice + Pitch Deck	External Invoice + Pitch Deck
80% Concept Art (Set Design/Character Design/Mood Board)	8.000,00€		–	Calculation
20% Concept Art (Set Design/Character Design/Mood Board)	2,000,00€		–	Proof of Use of Funds + Concept Art

* If this tool is selected, the PWC tool must also be selected.

PWC Tool

	ANIMATION FEATURE	ANIMATION FEATURE EMERGING TALENT	PROOF (IF APPLICANT IS A WRITER)	PROOF (IF APPLICANT IS A PRODUCER)
<i>all amounts up to</i>				
PWC TOOL	766,00€			

**Company
Development**

	ANIMATION FEATURE	ANIMATION FEATURE EMERGING TALENT	PROOF (IF APPLICANT IS A WRITER)	PROOF (IF APPLICANT IS A PRODUCER)
<i>all amounts up to</i>				
Tax Consulting	5,000,00€		–	External Invoice
Legal Advice	5,000,00€		–	External Invoice
Consulting on Corporate Strategy and Transformation	5,000,00€		–	External Invoice + ¼ Page Report by the Funding Recipient
Leadership Coaching	5,000,00€		–	External Invoice + ¼ Page Report by the Funding Recipient
New Work Coaching	5,000,00€		–	External Invoice + ¼ Page Report by the Funding Recipient
Human Ressources Coaching (Diversity + Approach)	5,000,00€		–	External Invoice + ¼ Page Report by the Funding Recipient
Green Transformation Consulting	5,000,00€		–	External Invoice + ¼ Page Report by the Funding Recipient

Series Fiction

Support for Writers

	SERIES FICTION	SERIES FICTION EMERGING TALENT	PROOF (IF APPLICANT IS A WRITER)	PROOF (IF APPLICANT IS A PRODUCER)
NEST Classic				
If Applicant is a Writer	7,500,00€		Short Bible	–
If Applicant is a Producer	7,500,00€		–	Short Bible, Contract, Cost Status (net)

all amounts up to

Basic Funding	10,000,00€	7,500,00€	Short Bible	Short Bible, Contract
80% Development Pilot Script	16,000,00€	8.000,00€	Self-Declaration of Beginning of Measure	Script Development Contract
20% Development Pilot Script	4,000,00€	2,000,00€	Script	Script, Cost Status (net)
Pilot Script (2 nd Draft)	10,000,00€	8.000,00€	Script	Script, Cost Status (net)
Co-Writer (Pilot Script)	10,000,00€	5,000,00€	Self-Declaration of Beginning of Measure	Script Development Contract
Co-Writer (Pilot Script, 2 nd Draft)	5,000,00€	2,500,00€	Script	Script, Cost Status (net)

Support for Producers

all amounts up to

Short Bible - Script Consulting	2,500,00€		–	Internal Receipt with Billing Period
Pilot Script 1 st Draft - Script Consulting	10,000,00€		–	Internal Receipt with Billing Period
Pilot Script 2 nd Draft - Script Consulting	5,000,00€		–	Internal Receipt with Billing Period

External Services / Consulting

	SERIES FICTION	SERIES FICTION EMERGING TALENT	PROOF (IF APPLICANT IS A WRITER)	PROOF (IF APPLICANT IS A PRODUCER)
<i>all amounts up to</i>				
Short Bible - External Script Consulting	2,000,00€		External Invoice	External Invoice
Pilot Script - External Script Consulting	5,000,00€		External Invoice	External Invoice
Legal Advice (Copyright/ Privacy Rights)	1,500,00€		External Invoice + ¼ Page Report by the Funding Recipient	External Invoice + ¼ Page Report by the Funding Recipient
Sensitivity Reading + Consulting	1,500,00€		External Invoice + ¼ Page Report by the Funding Recipient	External Invoice + ¼ Page Report by the Funding Recipient
Green Storytelling	1,500,00€		External Invoice + ¼ Page Report by the Funding Recipient	External Invoice + ¼ Page Report by the Funding Recipient
Translations	2,500,00€		External Invoice	External Invoice
Casting Consulting	2,500,00€		External Invoice	External Invoice
Expert Advice on Specialist Topics	2,000,00€		External Invoice + ¼ Page Report by the Funding Recipient	External Invoice + ¼ Page Report by the Funding Recipient
AI Project Consulting	1,000,00€		External Invoice + ¼ Page Report by the Funding Recipient	External Invoice + ¼ Page Report by the Funding Recipient
VFX/Post-Production Consulting	1,500,00€		External Invoice + ¼ Page Report by the Funding Recipient	External Invoice + ¼ Page Report by the Funding Recipient
Writers' Room Consulting	1,500,00€		External Invoice + ¼ Page Report by the Funding Recipient	External Invoice + ¼ Page Report by the Funding Recipient

Audience Development / Visualisation

	SERIES FICTION	SERIES FICTION EMERGING TALENT	PROOF (IF APPLICANT IS A WRITER)	PROOF (IF APPLICANT IS A PRODUCER)
<i>all amounts up to</i>				
Independent National Market Analysis based on 1 st Draft of Pilot Script (artistic & commercial potential/SWOT/ festivals/key territories/ USP)	1,500,00€		–	External Invoice + Analysis
Independent International Market Analysis based on 1 st Draft of Pilot Script (artistic & commercial potential/SWOT/ festivals/key territories/ USP)	1,500,00€		–	External Invoice + Analysis
Target Group Feedback (e.g. reading with school class, workshop with stakeholders)	2,000,00€		–	Cost Status (net) + Report
External Graphic Design for further Project Development or Pitch Deck	2,000,00€		External Invoice + Pitch Deck	External Invoice + Pitch Deck

**Company
Development**

	SERIES FICTION	SERIES FICTION EMERGING TALENT	PROOF (IF APPLICANT IS A WRITER)	PROOF (IF APPLICANT IS A PRODUCER)
<i>all amounts up to</i>				
Tax Consulting	5,000,00€		–	External Invoice
Legal Advice	5,000,00€		–	External Invoice
Consulting on Corporate Strategy and Transformation	5,000,00€		–	External Invoice + ¼ Page Report by the Funding Recipient
Leadership Coaching	5,000,00€		–	External Invoice + ¼ Page Report by the Funding Recipient
New Work Coaching	5,000,00€		–	External Invoice + ¼ Page Report by the Funding Recipient
Human Ressources Coaching (Diversity + Approach)	5,000,00€		–	External Invoice + ¼ Page Report by the Funding Recipient
Green Transformation Consulting	5,000,00€		–	External Invoice + ¼ Page Report by the Funding Recipient

Series Documentary

Support for Writers

	SERIES DOCUMENTARY	SERIES DOCUMENTARY EMERGING TALENT	PROOF (IF APPLICANT IS A WRITER)	PROOF (IF APPLICANT IS A PRODUCER)
NEST Classic				
If Applicant is a Writer	7,500,00€		Short Bible	–
If Applicant is a Producer	7,500,00€		–	Short Bible, Contract, Cost Status (net)

all amounts up to

Basic Funding	10,000,00€	7,500,00€	Short Bible	Short Bible, Contract
80% Development Pilot Script	16,000,00€	8.000,00€	Self-Declaration of Beginning of Measure	Script Development Contract
20% Development Pilot Script	4,000,00€	2,000,00€	Script	Script, Cost Status (net)
Pilot Script (2 nd Draft)	10,000,00€	8.000,00€	Script	Script, Cost Status (net)
Co-Writer Pilot Script	10,000,00€	5,000,00€	Self-Declaration of Beginning of Measure	Script Development Contract
Co-Writer (2 nd Draft) Pilot Script	5,000,00€	2,500,00€	Script	Script, Cost Status (net)
Travel Expenses (Director)	2,500,00€		Cost Status (net)	Cost Status (net)

Support for Producers

all amounts up to

Short Bible - Script Consulting	2,500,00€		–	Internal Receipt with Billing Period
Pilot Script (1 st Draft) - Script Consulting	10,000,00€		–	Internal Receipt with Billing Period
Pilot Script (2 nd Draft) - Script Consulting	5,000,00€		–	Internal Receipt with Billing Period
Travel Expenses (Director)	2,500,00€		–	Cost Status (net)

External Services / Consulting

	SERIES DOCUMENTARY	SERIES EMERGING TALENT	PROOF (IF APPLICANT IS A WRITER)	PROOF (IF APPLICANT IS A PRODUCER)
<i>all amounts up to</i>				
Short Bible - External Script Consulting	2,000,00€		External Invoice	External Invoice
Pilotbuch 1. Fassung - externe Dramturgie	2,500,00€		External Invoice	External Invoice
Pilotbuch 2. Fassung - externe Dramturgie	2,500,00€		External Invoice	External Invoice
Legal Advice (Copyright/ Privacy Rights)	1,500,00€		External Invoice + ¼ Page Report by the Funding Recipient	External Invoice + ¼ Page Report by the Funding Recipient
Sensitivity Reading + Consulting	1,500,00€		External Invoice + ¼ Page Report by the Funding Recipient	External Invoice + ¼ Page Report by the Funding Recipient
Green Storytelling	1,500,00€		External Invoice + ¼ Page Report by the Funding Recipient	External Invoice + ¼ Page Report by the Funding Recipient
Translations	2,500,00€		External Invoice	External Invoice
Expert Advice on Specialist Topics	2,000,00€		External Invoice + ¼ Page Report by the Funding Recipient	External Invoice + ¼ Page Report by the Funding Recipient
Research (incl. Travel Expenses)	1,500,00€		External Invoice	External Invoice
AI Project Consulting	1,000,00€		External Invoice + ¼ Page Report by the Funding Recipient	External Invoice + ¼ Page Report by the Funding Recipient
VFX/Post-Production Consulting	1,500,00€		External Invoice + ¼ Page Report by the Funding Recipient	External Invoice + ¼ Page Report by the Funding Recipient
Dialog Polish	3,000,00€		External Invoice	External Invoice
Writers' Room Consulting	1,500,00€		External Invoice + ¼ Page Report by the Funding Recipient	External Invoice + ¼ Page Report by the Funding Recipient

Audience Development / Visualisation

	SERIES DOCUMENTARY	SERIES DOCUMENTARY EMERGING TALENT	PROOF (IF APPLICANT IS A WRITER)	PROOF (IF APPLICANT IS A PRODUCER)
<i>all amounts up to</i>				
Independent National Market Analysis based on 1 st draft of Pilot Script (artistic & commercial potential/SWOT/festivals/key territories/ USP)	1,500,00€		–	External Invoice + Analysis
Independent International Market Analysis based on 1 st draft of Pilot Script (artistic & commercial potential/SWOT/festivals/key territories/ USP)	1,500,00€		–	External Invoice + Analysis
Target Group Feedback (e.g. reading with school class, workshop with stakeholders)	2,000,00€		–	Cost Status (net) + Report
External Graphic Design for further Project Development or Pitch Deck	2,000,00€		External Invoice + Pitch Deck	External Invoice + Pitch Deck
80% Test Shoot or Trailer Production*	6,000,00€		Calculation	Calculation
20% Test Shoot or Trailer Production*	1,500,00€		Proof of Use of Funds + Test-/Trailer material	Proof of Use of Funds + Test-/Trailer material

* If this tool is selected, the PWC tool must also be selected.

PWC Tool

	SERIES DOCUMENTARY	SERIES DOCUMENTARY EMERGING TALENT	PROOF (IF APPLICANT IS A WRITER)	PROOF (IF APPLICANT IS A PRODUCER)
<i>all amounts up to</i>				
PWC TOOL	766,00€			

**Company
Development**

	SERIES DOCUMENTARY	SERIES EMERGING TALENT	PROOF (IF APPLICANT IS A WRITER)	PROOF (IF APPLICANT IS A PRODUCER)
<i>all amounts up to</i>				
Tax Consulting	5,000,00€		–	External Invoice
Legal Advice	5,000,00€		–	External Invoice
Consulting on Corporate Strategy and Transformation	5,000,00€		–	External Invoice + ¼ Page Report by the Funding Recipient
Leadership Coaching	5,000,00€		–	External Invoice + ¼ Page Report by the Funding Recipient
New Work Coaching	5,000,00€		–	External Invoice + ¼ Page Report by the Funding Recipient
Human Ressources Coaching (Diversity + Approach)	5,000,00€		–	External Invoice + ¼ Page Report by the Funding Recipient
Green Transformation Consulting	5,000,00€		–	External Invoice + ¼ Page Report by the Funding Recipient

Series Animation

Support for Writers

	SERIES ANIMATION	SERIES ANIMATION EMERGING TALENT	PROOF (IF APPLICANT IS A WRITER)	PROOF (IF APPLICANT IS A PRODUCER)
NEST Classic				
If Applicant is a Writer	7,500,00€		Short Bible	–
If Applicant is a Producer	7,500,00€		–	Short Bible, Contract, Cost Status (net)

all amounts up to

Basic Funding	10,000,00€	7,500,00€	Short Bible	Short Bible, Contract
80% Development Pilot Script	16,000,00€	8.000,00€	Self-Declaration of Beginning of Measure	Script Development Contract
20% Development Pilot Script	4,000,00€	2,000,00€	Script	Script, Cost Status (net)
Pilot Script (2 nd Draft)	10,000,00€	8.000,00€	Script	Script, Cost Status (net)
Co-Writer Pilot Script	10,000,00€	5,000,00€	Self-Declaration of Beginning of Measure	Script Development Contract
Co-Writer (Pilot Script, 2 nd Draft)	5,000,00€	2,500,00€	Script	Script, Cost Status (net)

Support for Producers

all amounts up to

Short Bible - Script Consulting	2,500,00€		–	Internal Receipt with Billing Period
Pilot Script 1 st Draft - Script Consulting	10,000,00€		–	Internal Receipt with Billing Period
Pilot Script 2 nd Draft - Script Consulting	5,000,00€		–	Internal Receipt with Billing Period

External Services / Consulting

	SERIES ANIMATION	SERIES ANIMATION EMERGING TALENT	PROOF (IF APPLICANT IS A WRITER)	PROOF (IF APPLICANT IS A PRODUCER)
<i>all amounts up to</i>				
Short Bible - External Script Consulting	2,000,00€		External Invoice	External Invoice
Pilot Script - External Script Consulting	5,000,00€		External Invoice	External Invoice
Legal Advice (Copyright/ Privacy Rights)	1,500,00€		External Invoice + ¼ Page Report by the Funding Recipient	External Invoice + ¼ Page Report by the Funding Recipient
Sensitivity Reading + Consulting	1,500,00€		External Invoice + ¼ Page Report by the Funding Recipient	External Invoice + ¼ Page Report by the Funding Recipient
Green Storytelling	1,500,00€		External Invoice + ¼ Page Report by the Funding Recipient	External Invoice + ¼ Page Report by the Funding Recipient
Translations	2,500,00€		External Invoice	External Invoice
Casting Consulting	2,500,00€		External Invoice	External Invoice
Expert Advice on Specialist Topics	2,000,00€		External Invoice + ¼ Page Report by the Funding Recipient	External Invoice + ¼ Page Report by the Funding Recipient
AI Project Consulting	1,000,00€		External Invoice + ¼ Page Report by the Funding Recipient	External Invoice + ¼ Page Report by the Funding Recipient
VFX/Post-Production Consulting	1,500,00€		External Invoice + ¼ Page Report by the Funding Recipient	External Invoice + ¼ Page Report by the Funding Recipient
Dialog Polish	3,000,00€		External Invoice	External Invoice
Writers' Room Consulting	1,500,00€		External Invoice + ¼ Page Report by the Funding Recipient	External Invoice + ¼ Page Report by the Funding Recipient

Audience Development / Visualisation

	SERIES ANIMATION	SERIES ANIMATION EMERGING TALENT	PROOF (IF APPLICANT IS A WRITER)	PROOF (IF APPLICANT IS A PRODUCER)
<i>all amounts up to</i>				
Independent National Market Analysis based on 1 st draft of Pilot Script (artistic & commercial potential/SWOT/ festivals/key territories/ USP)	1,500,00€		–	External Invoice + Analysis
Independent International Market Analysis based on 1 st draft of Pilot Script (artistic & commercial potential/SWOT/ festivals/key territories/ USP)	1,500,00€		–	External Invoice + Analysis
Beat Board (internal)	2,000,00€		Internal Receipt with Billing Period + Beat Board	Internal Receipt with Billing Period + Beat Board
Beat Board (external)	2,000,00€		External Invoice + Beat Board	External Invoice + Beat Board
Target Group Feedback (e.g. reading with school class, workshop with stakeholders)	2,000,00€		–	Cost Status (net) + Report
External Graphic Design for further Project Development or Pitch Deck	2,000,00€		External Invoice + Pitch Deck	External Invoice + Pitch Deck
80% Concept Art (Set Design/Character Design/Mood Board)	8.000,00€		–	Calculation
20% Concept Art (Set Design/Character Design/Mood Board)*	2,000,00€		–	Proof of Use of Funds + Concept Art

* If this tool is selected, the PWC tool must also be selected.

PWC Tool

	SERIES ANIMATION	SERIES ANIMATION EMERGING TALENT	PROOF (IF APPLICANT IS A WRITER)	PROOF (IF APPLICANT IS A PRODUCER)
<i>all amounts up to</i>				
PWC TOOL	766,00€			

**Company
Development**

	SERIES ANIMATION	SERIES ANIMATION EMERGING TALENT	PROOF (IF APPLICANT IS A WRITER)	PROOF (IF APPLICANT IS A PRODUCER)
<i>all amounts up to</i>				
Tax Consulting	5,000,00€		–	External Invoice
Legal Advice	5,000,00€		–	External Invoice
Consulting on Corporate Strategy and Transformation	5,000,00€		–	External Invoice + ¼ Page Report by the Funding Recipient
Leadership Coaching	5,000,00€		–	External Invoice + ¼ Page Report by the Funding Recipient
New Work Coaching	5,000,00€		–	External Invoice + ¼ Page Report by the Funding Recipient
Human Resources Coaching (Diversity + Approach)	5,000,00€		–	External Invoice + ¼ Page Report by the Funding Recipient
Green Transformation Consulting	5,000,00€		–	External Invoice + ¼ Page Report by the Funding Recipient

Innovative Audiovisual Formats

Support for Creators

	INNOVATIVE FORMATS	INNOVATIVE FORMATS EMERGING TALENT	PROOF (IF APPLICANT IS CREATOR)	PROOF (IF APPLICANT IS A PRODUCER)
NEST Classic	<i>all amounts up to</i>			
If Applicant is Creator	7,500,00€		Idea Paper	–
If Applicant is a Producer	7,500,00€		–	Idea Paper, Contract, Cost Status (net)
	<i>all amounts up to</i>			
Basic Funding	10,000,00€	7,500,00€	Idea Paper	Idea Paper, Contract
80% Concept Development	10,000,00€	6,000,00€	Self-Declaration of Beginning of Measure	Contract
20% Concept Development	2,500,00€	1,500,00€	Concept	Concept, Cost Status (net)
80% Concept Development (Team of Creators)	12,000,00€	8.000,00€	Self-Declaration of Beginning of Measure	Contract
20% Concept Development (Team of Creators)	2,500,00€	2,000,00€	Concept	Concept, Cost Status (net)
Travel Expenses (Creators, in case of documentary format)	2,500,00€		Cost Status (net)	Cost Status (net)

Support for Producers

	INNOVATIVE FORMATS	INNOVATIVE FORMATS EMERGING TALENT	PROOF (IF APPLICANT IS CREATOR)	PROOF (IF APPLICANT IS A PRODUCER)
<i>all amounts up to</i>				
Ideeneerarbeitung - Script Consulting	2,500,00€		–	Internal Receipt with Billing Period
Concept Development - Script Consulting	5,000,00€		–	Internal Receipt with Billing Period
Ideeneerarbeitung - Script Consulting (wenn in Personalunion)	1,500,00€		–	Internal Receipt with Billing Period
Concept Development - Script Consulting (if personnel union)	3,000,00€		–	Internal Receipt with Billing Period
Travel Expenses (in case of documentary format)	2,500,00€		–	Cost Status (net)

External Services / Consulting

	INNOVATIVE FORMATS	INNOVATIVE FORMATS EMERGING TALENT	PROOF (IF APPLICANT IS CREATOR)	PROOF (IF APPLICANT IS A PRODUCER)
<i>all amounts up to</i>				
Idea Paper - External Script Consulting	1,000,00€		External Invoice	External Invoice
Concept - External Script Consulting	2,500,00€		External Invoice	External Invoice
Legal Advice (Copyright/ Privacy Rights)	1,500,00€		External Invoice	External Invoice
Sensitivity Reading + Consulting	1,500,00€		External Invoice + ¼ Page Report by the Funding Recipient	External Invoice + ¼ Page Report by the Funding Recipient
Green Storytelling/- Consulting	1,500,00€		External Invoice + ¼ Page Report by the Funding Recipient	External Invoice + ¼ Page Report by the Funding Recipient
Translations	1,500,00€		External Invoice	External Invoice
Expert Advice on Specialist Topics/ Recherche	2,000,00€		External Invoice + ¼ Page Report by the Funding Recipient	External Invoice + ¼ Page Report by the Funding Recipient
Technical/XR Consulting	5,000,00€		External Invoice + ¼ Page Report by the Funding Recipient	External Invoice + ¼ Page Report by the Funding Recipient
AI Project Consulting	1,500,00€		External Invoice + ¼ Page Report by the Funding Recipient	External Invoice + ¼ Page Report by the Funding Recipient
VFX/Postproduction Consulting	1,500,00€		External Invoice + ¼ Page Report by the Funding Recipient	External Invoice + ¼ Page Report by the Funding Recipient
Accessibility Consulting	1,500,00€		External Invoice + ¼ Page Report by the Funding Recipient	External Invoice + ¼ Page Report by the Funding Recipient

Audience Development / Visualisation

	INNOVATIVE FORMATS	INNOVATIVE FORMATS EMERGING TALENT	PROOF (IF APPLICANT IS CREATOR)	PROOF (IF APPLICANT IS A PRODUCER)
<i>all amounts up to</i>				
Independent International Market Analysis based on Concept Paper (artistic & commercial potential/ SWOT/festivals/key territories/USP)	1,500,00€		External Invoice + Analysis	External Invoice + Analysis
Target Group Feedback (e.g. workshop with stakeholders)	2,000,00€		Cost Status (net) + Report	Cost Status (net) + Report
80% Concept Paper Development - Technology	6,000,00€		Calculation	Calculation
20% Concept Paper Development - Technology*	1,500,00€		Proof of Use of Funds + Report	Proof of Use of Funds + Report
80% Concept Paper Development - Design	6,000,00€		Calculation	Calculation
20% Concept Paper Development - Design*	1,500,00€		Proof of Use of Funds + Report	Proof of Use of Funds + Report
External Graphic Design for further Project Development or Pitch Deck	2,000,00€		External Invoice	External Invoice
80% Test Shoot or Trailer Production	6,000,00€		Calculation	Calculation
20% Test Shoot or Trailer Production*	1,500,00€		Proof of Use of Funds + Report	Proof of Use of Funds + Report

PWC Tool

	INNOVATIVE FORMATS	INNOVATIVE FORMATS EMERGING TALENT	PROOF (IF APPLICANT IS CREATOR)	PROOF (IF APPLICANT IS A PRODUCER)
<i>all amounts up to</i>				
PWC TOOL	766,00€			

**Unternehmens-
entwicklung**

	INNOVATIVE FORMATS	INNOVATIVE FORMATS EMERGING TALENT	PROOF (IF APPLICANT IS CREATOR)	PROOF (IF APPLICANT IS A PRODUCER)
<i>all amounts up to</i>				
Tax Consulting	5,000,00€		–	External Invoice
Legal Advice	5,000,00€		–	External Invoice
Consulting on Corporate Strategy and Transformation	5,000,00€		–	External Invoice + ¼ Page Report by the Funding Recipient
Leadership Coaching	5,000,00€		–	External Invoice + ¼ Page Report by the Funding Recipient
New Work Coaching	5,000,00€		–	External Invoice + ¼ Page Report by the Funding Recipient
Human Resources Coaching (Diversity + Approach)	5,000,00€		–	External Invoice + ¼ Page Report by the Funding Recipient
Green Transformation Consulting	5,000,00€		–	External Invoice + ¼ Page Report by the Funding Recipient